

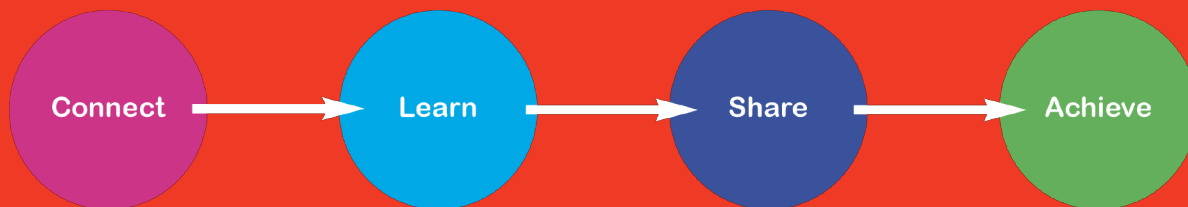
# <sup>the</sup> Investigator

ESSENTIAL LEARNING FOR TODAY'S INVESTIGATORS



# 9th

## National Analyst's Annual Conference 23-24 April 2024



Headline sponsor



Silver sponsor



Networking sponsor



Organiser



# Trusted Intelligence Analysis

Empowering Analysts  
for over 30 years

i 2

[i2group.com](https://i2group.com)

- || Network Analysis
- || Temporal Analysis
- || Geospatial Analysis
- || Pattern Analysis
- || Exploit Unstructured Data

**CONNECTEDi2**  
User and Training Conference  
EUROPE 2024

**Save the Date!**

25 & 26th September 2024, London.

User and Training Conference, Europe

Registration opening soon!



## AGENDA

### Day One

9am-9.10am:

Welcome and introduction, Carol Jenkins, The Investigator

9.10am-10.10am:

An insight into the work of analysts from the Met Police newly set-up Developing Threats Team. They are breaking new ground in layering up data sets and using large scale analysis techniques to see new opportunities for disruption in serious and organised crime, Andrew Dunn and Rian Charles, Intelligence Analysts.

This session will be introduced by Mark Parkinson, Head of Analysis and Research, Digital and Specialist Capability, Met Police, to highlight how analysts are being deployed in innovative ways in the force and playing an integral part in the identification and disruption of serious criminality in London.

10.10am-11am:

How analysts have changed the way the North West Region polices ownership of firearms and responds to firearms thefts with its innovative working, Rosanna Guest, Intelligence Analyst, Firearms Regional Intelligence Unit, North West Regional Organised Crime Unit

11am-11.30am:

Break

11.30am-12.20pm:

West Yorkshire Police analysts have designed an analytical product to identify area of concerns around Serious and Organised Crime that details crime, vulnerabilities, demographics and intelligence which then drives operational activity, Micaela Farrar, Senior Threat Desk Analyst and Research Co-ordinator, Force Threat Desk and Jennifer Dennison, Serious and Organised Crime Analyst, West Yorkshire Police

12.20pm-1.10pm:

**Headline sponsor presentation:** Using Social Network Analysis for Targeted Disruption, Early Intervention and CHIS Identification, Seth Cooke, Technical and Tradecraft Subject Matter Expert, i2

1.10pm-2pm:

Lunch

2pm-2.40pm:

Three common areas of concern that could impact analysts and their analysis and practical strategies to overcome them. The three areas include concerns around: pushing the boundaries of analysis, communicating work to a wider audience and fear of change, Jon Ayres, Intelligence Analysis Manager, Force Review Team, Thames Valley Police

2.40pm-3.20pm:

**Silver sponsor presentation:** Operation Permian, catching a killer; the investigation into the disappearance of new mother Abbie Richardson was enhanced with the capabilities of the GeoTime software to swiftly locate her and when events took a dark turn, rapidly bring a suspect to justice, PC Sam Hollings, West Yorkshire Police.

3.20pm-3.50pm:

Break

3.50pm-4.40pm:

Exploring Communications Data Opportunities: Thinking beyond call data and understanding IP Addresses, Fenella Wheatley, Communications Data Special Point of Contact, Met Police

4.40pm-5.10pm:

Digital Intelligence for a Safer World - Utilising a Web Intelligence Platform to Enhance Investigations, Emma Wilson, Cobwebs Technologies

5.10pm:

Day one finishes

## AGENDA

### Day Two

**8.50am-9am:**

Welcome and introduction, Carol Jenkins, The Investigator

**9am-9.50am:**

Launch of innovative Capabilities Platform that will underpin the work of analysts from the National Tackling Organised Exploitation Programme, Lois Begley, Senior Intelligence Analyst, TOEX Programme, East Midlands Special Operations Unit and Lee Allen, Senior Intelligence Analyst, TOEX Programme, Tarian

**9.50am-10.30am:**

The role of Wellbeing Trauma Support Dogs in providing support and advice to investigators and analysts in UK police forces and law enforcement, Paul Roe, former police officer who runs the organisation Blue Paw and Holly, the Wellbeing Trauma Support Dog. Paul will be presenting, and Holly will be on hand to demonstrate how she works

**10.30am-11am:**

Break

**11am-11.40am:**

An update on the College of Policing Data Analytics, Literacy and Ethics Project, Mandy Kaur and Arnold Acheampong, project leads, College of Policing

**11.40am-12.20pm:**

How can analysts and investigators access cloud stored data and what can they get back? DI Adam Bryant, Head of Digital Operations, National Digital Exploitation Service

**12.20pm-1.10pm:**

Lunch

**1.10pm-1.50pm:**

Being prepared for emotionally demanding research and analysis in policing, Dr Amy Burrell, Research Fellow, School of Psychology, University of Birmingham

**1.50pm-2.30pm:**

Who Am I? Introversion, Anxiety and A Lack of Confidence. Clarifying distinctions between introversion, anxiety and lack of confidence while debunking misconceptions and providing practical coping strategies to help individuals thrive personally and professionally, Sarah Bryer, Coach and Mentor, known for her work in raising awareness and understanding of introverts.

**2.30pm:**

Conference finishes



**8pm - 23rd April**  
**Complimentary drink**

Networking sponsor



**BLACKRAINBOW**

## HEADLINE SPONSOR

### i2 group

The Bradfield Centre  
184 Cambridge Science Park  
Milton Road  
Cambridge  
CB4 0GA, UK  
E: [hello@i2group.com](mailto:hello@i2group.com)  
[www.i2group.com](http://www.i2group.com)



i2 Group is a world leader in intelligence analysis software. For more than 30 years we have empowered intelligence analysts and investigators to discover, create, and exploit actionable intelligence to identify the perpetrators of criminal activity. Our customers undertake some of the most critical intelligence analysis work on the planet. We help them to tackle everything from terrorism to tiger poaching, online exploitation to organised crime, and match fixing to modern day slavery.

Our proven link analysis tools provide policing capabilities to cover a broad spectrum of needs designed to operate effectively at various scales, including international, national, regional, local, or within a single team.

## SILVER SPONSOR

### JTOL Limited

The Business Centre,  
Edward Street, Redditch,  
B97 6HA, UK  
Tel: 03301 075930  
E: [info@jtol.co.uk](mailto:info@jtol.co.uk)  
[www.jtol.co.uk](http://www.jtol.co.uk)



JTOL Limited is a consultant and re-seller of innovative intelligence solutions within the field of analytics, covert surveillance, and cutting-edge IT technologies. JTOL will be showcasing GeoTime Desktop [GTD] a bespoke, data analysis solutions and the industries only 3D Mapping and Analysis tool for Law Enforcement.

GTD is a leading analytical technology that enables Law Enforcement Analysts, Investigators and DMI's to upload, visualise, analyse, collaborate, and quickly report on attributed data sets.

Drag and drop import over 500 data formats, merge, and attribute multiple data sources including CDRs [with auto import, normalisation and deduplication], Telematics [Berla], Phone downloads [Cellebrite, XRY], ANPR [BOF, NAS], GPS, Google Takeout, Facebook... With automated pattern analysis tools, finding meetings and locations of importance takes just seconds.

Partnering with ADF we'll also be showcasing the Mobile and Device Triage and Investigation tools, with the all New Chrome investigate capability.

### Chorus Intelligence Ltd

6 Quay Point, Station Road  
Woodbridge, IP12 4AL, UK  
Tel: 020 3597 7350  
E: [info@chorusintel.com](mailto:info@chorusintel.com)  
[www.chorusintel.com](http://www.chorusintel.com)



Chorus Intelligence is an award-winning supplier of data search, analysis, cleansing, enrichment, and evidential reporting tools, to law enforcement, government agencies, financial and corporate institutions across the globe. The Chorus Intelligence Suite (CIS) is a one platform, one dashboard solution for managing every stage of a digital investigation.

A powerhouse of investigative tools, the CIS supports multiple roles of varying expertise to get answers from data. Progress digital investigations confidently and spot connections seamlessly with dynamic visualisation and reporting in a single dashboard. For more information visit: [chorusintel.com](http://chorusintel.com)

## PENLINK COBWEBS

### Cobwebs Technologies UK Ltd

1-2 Charterhouse Mews  
London, EC1M 6BB, UK  
E: [patricia.zaidman@cobwebs.com](mailto:patricia.zaidman@cobwebs.com)  
[www.cobwebs.com](http://www.cobwebs.com)

We are a global leader in AI-powered digital intelligence, providing advanced digital evidence, open-source intelligence, and data analytics solutions. Our mission is to empower safety and security, protecting communities from crime and threats.

Our solutions enable law enforcement, national security, defense, and organizations to bring all digital intelligence into one platform to drive new levels of insights and efficiency.

Investigative teams can quickly identify leads, analyze risks, detect threats, and make critical connections by layering digital intelligence and evidence data. By leveraging open-source and the web's big data, users can gain deep insights and substantial intelligence including context, relations, locations, networks, and more. The platform accelerates investigations, delivers actionable insights, and facilitates informed decision-making.



#### **Control-F**

PO Box 167  
Sandy  
Bedfordshire  
SG19 3AL, UK  
020 8133 8750  
E: [info@controlf.co.uk](mailto:info@controlf.co.uk)  
[www.controlf.co.uk](http://www.controlf.co.uk)

Control-F provides classroom and online training to those tasked with recovering, analysing and interpreting digital evidence. Since 2007 we have been helping law enforcement and private sector organisations make sense of data recovered from computers and mobile devices.

Our training is vendor-neutral: our courses include commercial tools from multiple vendors and focus on understanding the underlying data. Our training materials are built on a belief that simple visuals are infinitely more powerful learning aids than wordy bullet points.

Our portfolio includes classroom and online training to help analysts and investigators better understand the data passed to them by Digital Forensic Units and Forensic Service Providers.



#### **NETWORKING SPONSOR**

##### **BlackRainbow**

Unit O, Camilla Court  
The Street, Nacton  
Ipswich IP10 0EU, UK  
Tel: +44 (0) 20 8050 9356  
E: [contact-uk@blackrainbow.com](mailto:contact-uk@blackrainbow.com)  
[www.blackrainbow.com](http://www.blackrainbow.com)

BlackRainbow brings a modern, intuitive, and innovative solution to market. The NIMBUS Platform, a comprehensive solution that revolutionises investigations and risk mitigation. With its powerful Intelligence, Investigation, Management & Orchestration Core, Portal, and Fusion Centre. Precise information to the right individuals anywhere any time, enabling effective decision-making and problem-solving.

**For a certificate of attendance email:  
[info@the-investigator.co.uk](mailto:info@the-investigator.co.uk)**



# Harper Shaw

INVESTIGATION CONSULTANTS LTD

#### **Harper Shaw Investigation Consultants Ltd**

First Floor, Spen Valley House, Bradford Road,  
Cleckheaton, West Yorkshire, BD19 5LT  
Tel: 01924 208060  
E: [info@harpershaw.co.uk](mailto:info@harpershaw.co.uk)  
[www.harpershaw.co.uk](http://www.harpershaw.co.uk)

Harper Shaw Investigation Consultants specialise in Vehicle Systems Forensics. Modern vehicles are equipped with various systems like infotainment and driver assistance, containing valuable data for crime or collision investigations.

Vehicle Systems Forensics is challenging due to manufacturers withholding technical data. Despite this, our company specialises in extracting data from all makes and models, investing in research and development. We are recognised as a go to company with the expertise and equipment for this task. We've conducted research, validation and testing on vehicle infotainment extractions, enhancing our understanding of data types.

As leading Vehicle Systems Forensics experts, we have developed a training programme for this forensic activity which is the first of its kind. Data analysis from the modern vehicle is complex with many different sources of data and vulnerabilities. It is paramount that it is understood properly for the Criminal Justice System and we use the training programme to share our research and findings.



#### **Siren**

15 Market Street  
Galway, H91 TCX3, Ireland  
Tel: +353 91 704 885  
E: [info@siren.io](mailto:info@siren.io)  
[www.siren.io](http://www.siren.io)

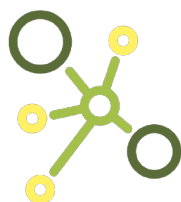
Siren is an innovative all-in-one platform used by law enforcement agencies and organisations worldwide. With a mission to safeguard people, assets, and networks and to empower investigators across diverse sectors, Siren uniquely integrates data from a variety of sources,



including open source data, external vendor data and classified proprietary data.

The platform uses a patented technology with the ability to connect multiple data sources and identify patterns and individuals. Siren empowers investigators within National Security, Public Safety, Fraud and Compliance, and Cyber Threat communities to analyse risks, identify threats, and combat crimes in a way that was previously not possible.

Siren provides an AI driven search that is a true paradigm shift in the investigative process. Using the Siren platform, analysts can access powerful and intuitive search capabilities, advanced analytics, real time dashboards, graphical visualisations and comprehensive reporting functionalities. Siren is unique in its ability to meet the demands of investigations at Enterprise speed and scale.



## SHORTEST PATH — TRAINING —

### Shortest Path Training Ltd

The Future Business Centre

King Hedges Road

Cambridge, UK

Tel: 01223 967100

E: [info@shortestpathtraining.co.uk](mailto:info@shortestpathtraining.co.uk)

[www.shortestpathtraining.co.uk](http://www.shortestpathtraining.co.uk)

Shortest Path Training is the leader in i2 software training with over 100 years combined experience. Assisting both Public and Private sector organisations in the quest to protect the public, through dedicated training.

Our Team is committed to providing training through scheduled courses either in the classroom, online our self-paced, closed and or tailored course are available which can assist organisations get the best training for the budget available.

**For a certificate of attendance email:  
[info@the-investigator.co.uk](mailto:info@the-investigator.co.uk)**

# 10th

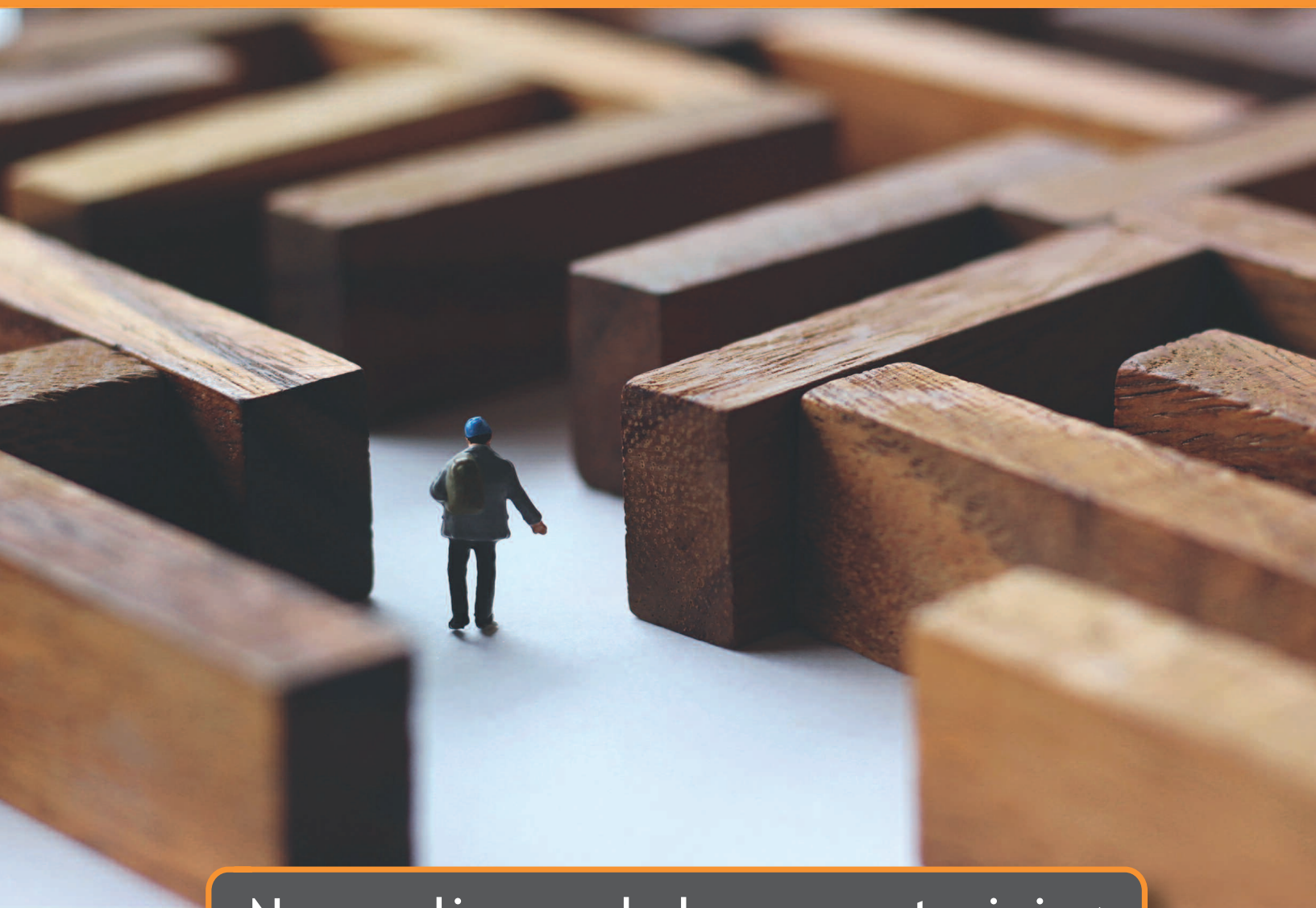
## National Analyst's Annual Conference

### 27-28 November 2024



**the  
Investigator**  
ESSENTIAL LEARNING FOR TODAY'S INVESTIGATORS

# Need help understanding mobile forensic data?



New online and classroom training  
for analysts & investigators



Visit our stand or [www.controlf.net](http://www.controlf.net) to find out more